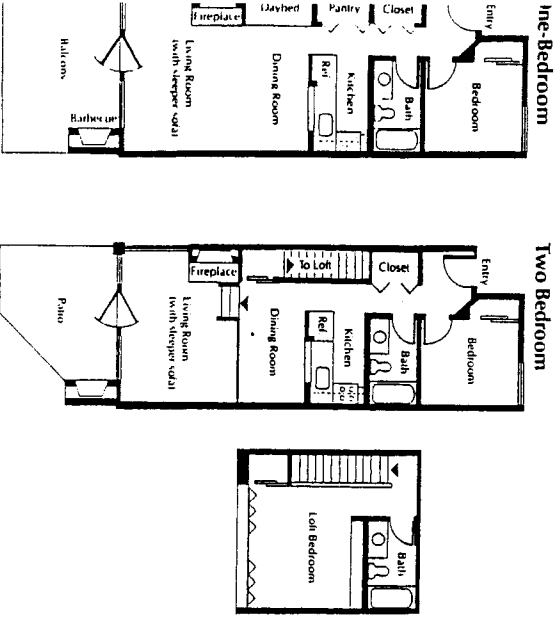


Time Share Condominium Floor Plans

Nekquelekin I & II



Nekquelekin I & II

- One Bedroom
- Two Bedroom
- Nekquelekin III
- One Bedroom

Amenities

Completely furnished
Full kitchen (dishwasher, disposal, self-cleaning oven, refrigerator with icemaker)
Microwave in Nekquelekin III units
Linens, dishes and cooking utensils (including percolator, toaster)
Color TV

Private patio or balcony with outdoor barbecue

Air conditioning

Fireplace

One-Bedroom

Built-in daybed

700 sq. ft.

Accommodates five

Ground level

Upper level

Two-Bedroom

Loft bedrooms may be closed off

Two baths

1,026 sq. ft.

Accommodates six

WAPATO POINT

Wapato Point Development Co. Ltd.

P.O. Box 426

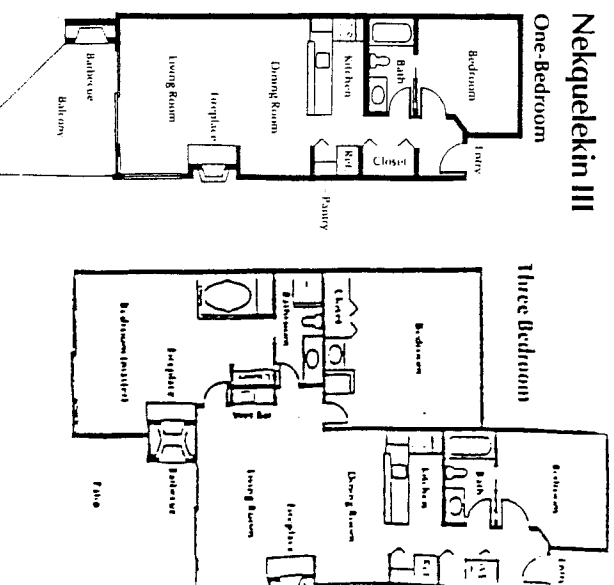
Manson, WA 98831

1 (800) 572-9531

Outside Washington call:

1 (509) 687-9511

Nekquelekin III



One-Bedroom

Accommodates five

Ground level

Upper level

Two-Bedroom

Loft bedrooms may be closed off

Two baths

1,026 sq. ft.

Accommodates six

WAPATO POINT

Wapato Point Development Co. Ltd.

P.O. Box 426

Manson, WA 98831

1 (800) 572-9531

Outside Washington call:

1 (509) 687-9511

Three Bedroom

Accommodates nine

Ground level

Upper level

Two-Bedroom

Loft bedrooms may be closed off

Two baths

1,400 sq. ft.

Accommodates nine

WAPATO POINT

Wapato Point Development Co. Ltd.

P.O. Box 426

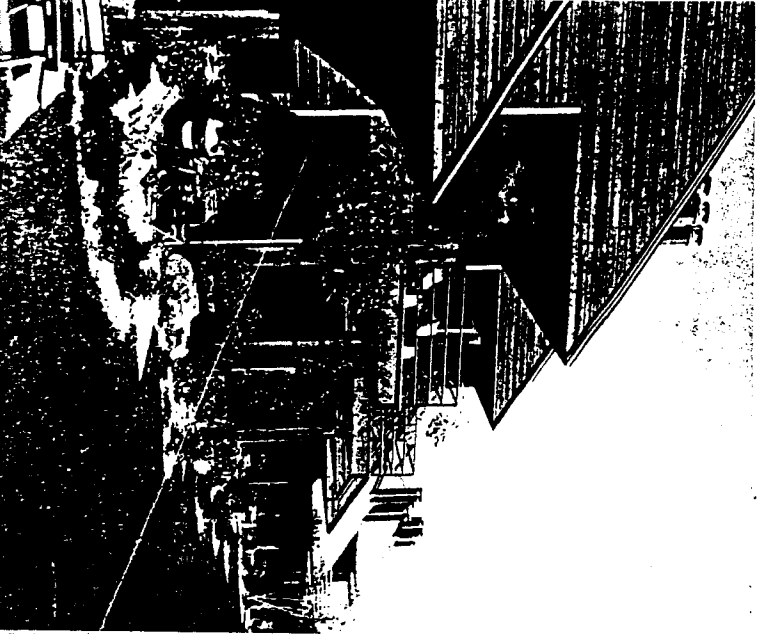
Manson, WA 98831

1 (800) 572-9531

Outside Washington call:

1 (509) 687-9511

Wapato Point



John Murray



John Murray

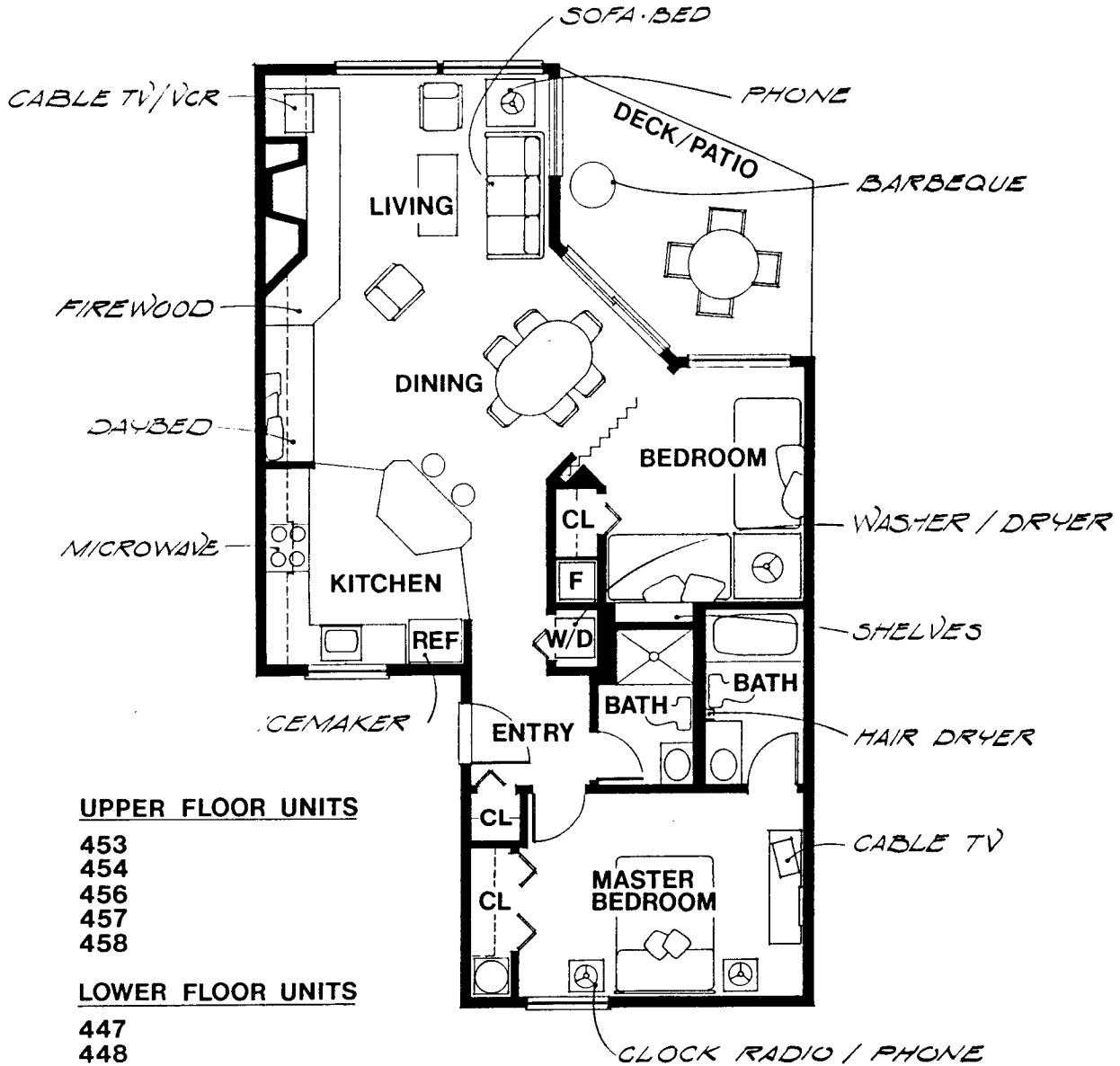


Frank Brennan

NEKQUELEKIN IV

TYPICAL 2-BEDROOM / 2-BATH

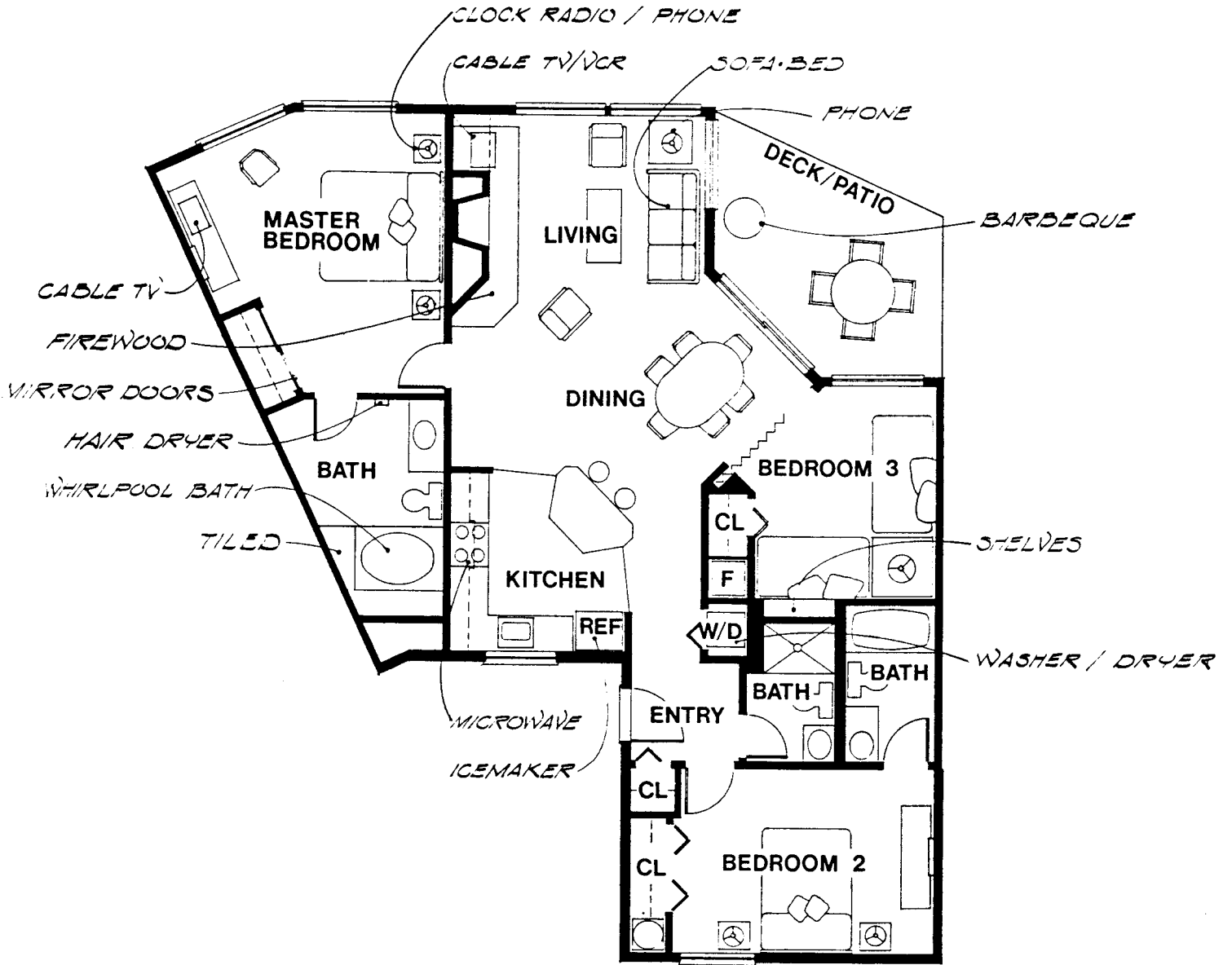
981 SF



NEKQUELEKIN IV

3-BEDROOM / 3-BATH

1308 SF



UPPER FLOOR · UNIT 455

LOWER FLOOR · UNIT 449